

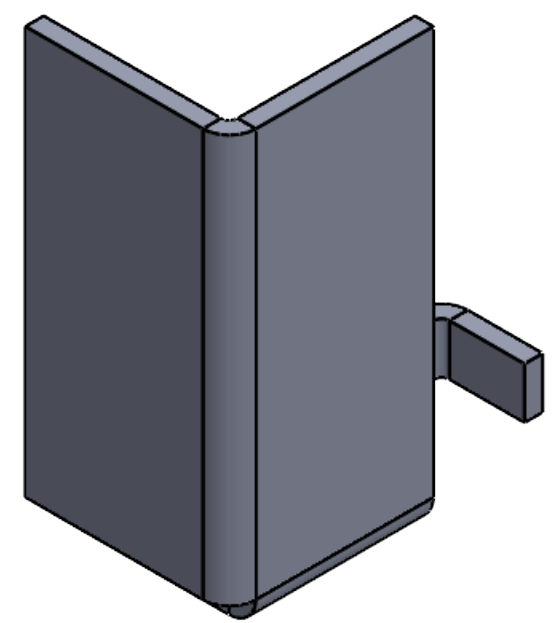
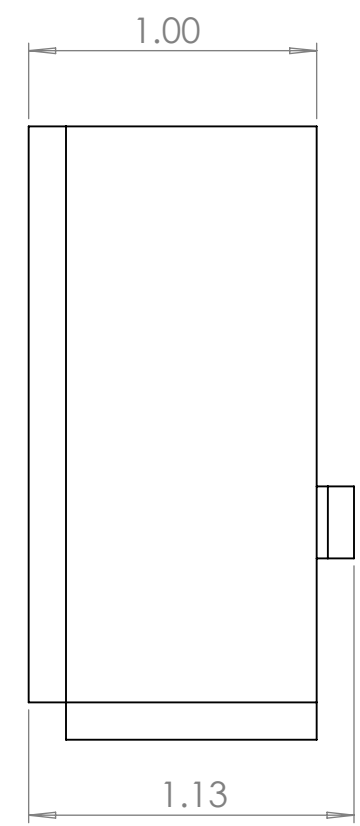
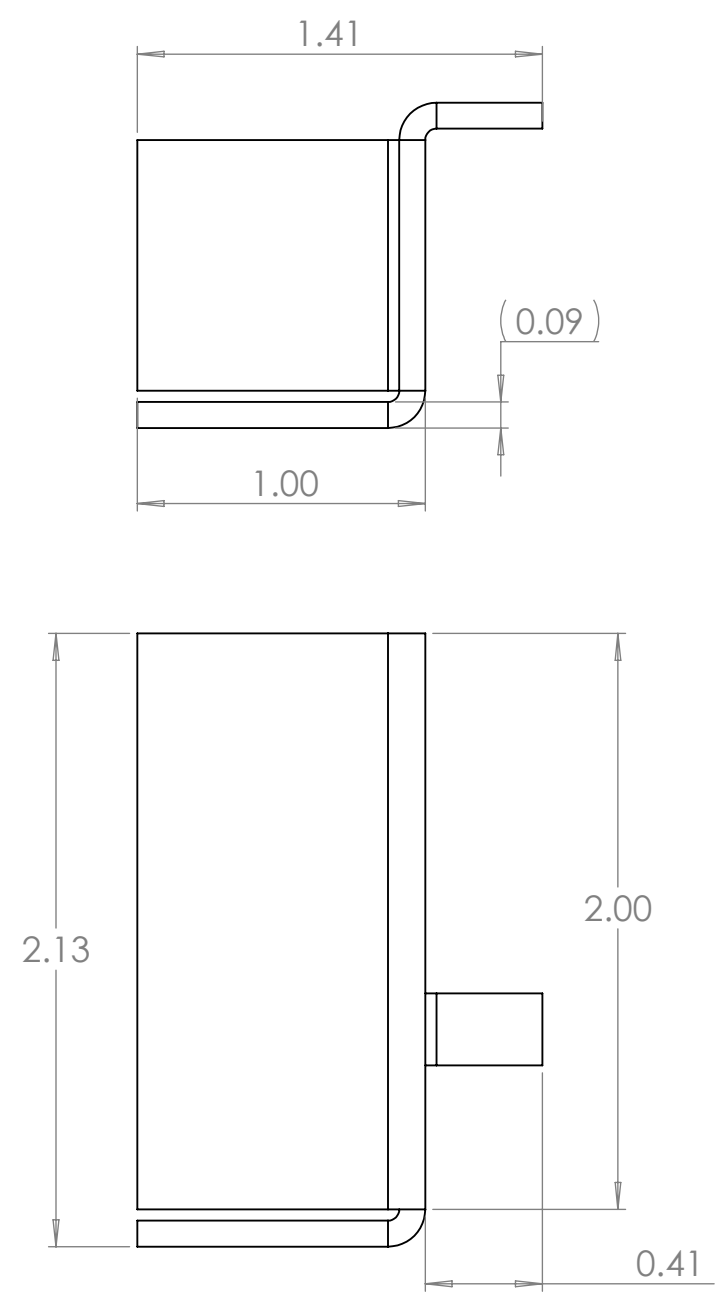
4

3

2

1

B



B


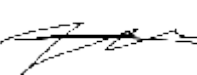
A

NOTES: UNLESS OTHERWISE SPECIFIED.

1. PARAMETRIC MODEL. ALL DIMENSIONS FURTHER SPECIFIED IN 003-00018.
2. FLAT PATTERN FOR PART SPECIFIED ON LAST SHEET OF DRAWING.
3. PART SHALL BE FREE OF ANY SHARP EDGES AND BURRS.
4. PART TO BE CLEANED OF ALL OIL AND DEBRIS.
5. MATERIAL: A1008 STEEL
6. FINISH: NONE
7. GAUGE: 13
8. PART SHALL NOT BE MODIFIED BY ANY PARTY OUTSIDE PAPERLESS PARTS, INC UNLESS WRITTEN OR EXPRESS APPROVAL HAS BEEN PERMITTED FOR THE PART.

**PROPRIETARY AND CONFIDENTIAL**

THE INFORMATION CONTAINED IN THIS DRAWING IS THE SOLE PROPERTY OF PAPERLESS PARTS, INC. ANY REPRODUCTION IN PART OR AS A WHOLE WITHOUT THE WRITTEN PERMISSION OF PAPERLESS PARTS, INC IS PROHIBITED.

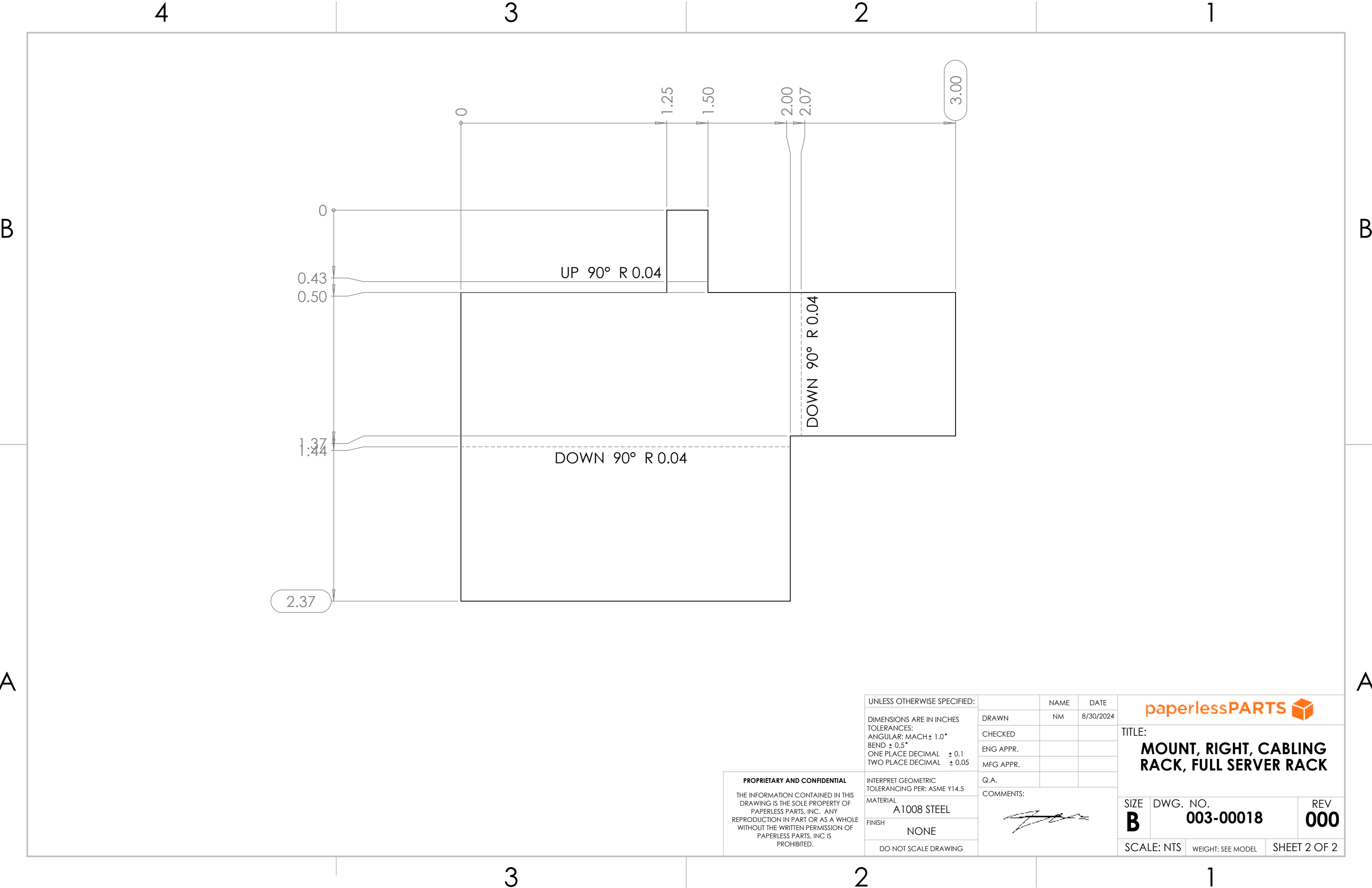
UNLESS OTHERWISE SPECIFIED:		NAME	DATE	<div></div>		
DIMENSIONS ARE IN INCHES TOLERANCES: ANGULAR: MACH ± 1.0° BEND ± 0.5° ONE PLACE DECIMAL     ± 0.1 TWO PLACE DECIMAL     ± 0.05		DRAWN	NM	8/30/2024		
		CHECKED				
		ENG APPR.				
		MFG APPR.				
INTERPRET GEOMETRIC TOLERANCING PER: ASME Y14.5		Q.A.		TITLE:  <b>MOUNT, RIGHT, CABLING RACK, FULL SERVER RACK</b>		
MATERIAL		COMMENTS:				
FINISH						
DO NOT SCALE DRAWING				SIZE <b>B</b>	DWG. NO. <b>003-00018</b>	REV <b>000</b>
				SCALE: NTS	WEIGHT: SEE MODEL	SHEET 1 OF 2

A

3


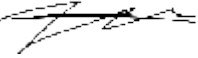
2

1



**PROPRIETARY AND CONFIDENTIAL**

THE INFORMATION CONTAINED IN THIS DRAWING IS THE SOLE PROPERTY OF PAPERLESS PARTS, INC. ANY REPRODUCTION IN PART OR AS A WHOLE WITHOUT THE WRITTEN PERMISSION OF PAPERLESS PARTS, INC IS PROHIBITED.

UNLESS OTHERWISE SPECIFIED:		NAME	DATE		
DIMENSIONS ARE IN INCHES		DRAWN	NM		
TOLERANCES:		CHECKED			
ANGULAR: MACH ± 1.0°		ENG APPR.			
BEND ± 0.5°		MFG APPR.			
ONE PLACE DECIMAL ± 0.1		Q.A.			
TWO PLACE DECIMAL ± 0.05		COMMENTS:			
MATERIAL		A1008 STEEL		SIZE	DWG. NO.
FINISH		NONE		<b>B</b>	<b>003-00018</b>
DO NOT SCALE DRAWING				SCALE: NTS	WEIGHT: SEE MODEL
				SHEET 2 OF 2	
				REV	<b>000</b>

TITLE:

**MOUNT, RIGHT, CABLING  
RACK, FULL SERVER RACK**